

Frog Identification



Chorus Frog
3/4" to 1 1/2"
Breeds very early, often while snow remains. A tree frog with long black mask and three dark stripes down its back. Sound: Stumming a comb with your thumb.



Wood Frog
1 3/8" to 3 1/4"
Breeds early in spring then disappears into moist woodlands. Note short black mask. Sound: Like rubbing finger on wet balloon.



Northern Leopard Frog
2" to 5"
Slender brown or green frog with light edges around irregularly shaped spots. Sound: Low croaking snore that lasts for several seconds.



Pickerel Frog
1 3/4" to 3 1/2"
Slender green or tan frog with parallel rows of square shaped spots down its back. Yellow belly patch by inner thigh. Sound: Soft and low snore-like croak similar to leopard frog only softer and shorter.

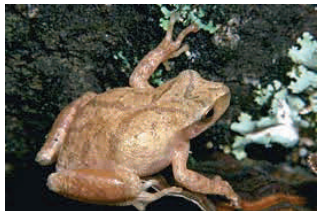
Frog and Toad Identification Guide Upper Michigan



Mink Frog
1 7/8" to 3"
Olive to brown in color with uniform mottling along sides and legs. Pungent mink like odor. Yellowish colored belly. Sound: Like knocking on wood or like popcorn popping when in full chorus.



Green Frog
2 1/8" to 4"
Green or brownish colored frog with green upper lip. Large eardrum. White belly with black spots. Sounds like banjo strings.



Spring Peeper
3/4" to 1 3/8"
One of our smallest and most abundant tree frogs. Note the brown color and x mark on its back. Sound: Loud peeping



Northern Cricket Frog
5/8" to 1 1/2"
Very rare tiny tree frog that looks almost black. Has a dark triangle between eyes. Sound: Tapping stones together.



Fowler's Toad
2" - 3 1/2"
Large bumpy brown colored toad. Lighter belly and more warts than A. Toad. Sound: Short bleating lamb cry 'wuh'.



American Toad
2" to 4 3/8"
Large bumpy brown to greenish colored toad. Sound: A long high pitched trill that lasts about 15-30 seconds.



Cope's Grey Tree Frog
1 1/4" to 2 3/8"
Rarely venture from the trees. Bright green to grey usually with splotches of grey. Sticky texture. Bright yellow patches underside of hind legs. Sound: Similar to Gray Treefrog but faster, higher pitched trill with more buzzy quality.



Eastern Grey Tree Frog
1 1/4" to 2 3/8"
Rarely venture from the trees. Bright green to grey usually with splotches of grey. Sticky texture. Bright yellow patches underside of hind legs. Sound: A short trill that sounds like a raccoon..



Bull Frog
3 1/2" to 8"
Our largest frog in Michigan but not very common locally. Greenish yellow with random mottling. Cream colored belly with lighter gray spots. Sound: A deep 'juga-rum' or 'drum'.